

TIBCO BUSINESS STUDIO

AT A GLANCE

TIBCO Business Studio™ is a standards-based, unified business process modeling and development environment that enables business experts and IT to collaborate to model, develop and deploy business process applications. It is also the common Eclipse-based environment for building composite applications across TIBCO's BPM and SOA software.

BENEFITS

- **Business Empowerment:** Business experts own, model, and manage their business process assets.
- **Improved Process Management:** Explicit process models improve the understanding of business processes across the organization, the accuracy of process execution, and the ability to optimize processes.
- **Enhanced Collaboration:** Enables business and IT to work collaboratively together to ensure that processes developed reflect actual business needs and reduce the time and effort to develop them.
- **Single Process Model:** Both business and IT use a single process model that ensures a single point of reference and avoids "round trip" issues between different tools.
- **Rapid Process Development:** Model-driven approach simplifies process development allowing a fast, iterative approach that delivers rapid time to benefit.
- **Better Processes:** Simulation capabilities allow processes to be validated, bottlenecks to be identified, and optimizations to be implemented.
- **Investment Protection:** Support for popular BPMN, XPDL, and UML modeling standards ensures that processes are portable among modeling tools.

Business processes are one of the most important assets of a company. They are part of what gives a company its competitive advantage. Yet most processes are not managed as a corporate asset. They are not well understood, documented, or measured. Requirements get handed over to IT on paper with the possibility of misunderstanding. Lack of explicit process management means processes are hard to change.

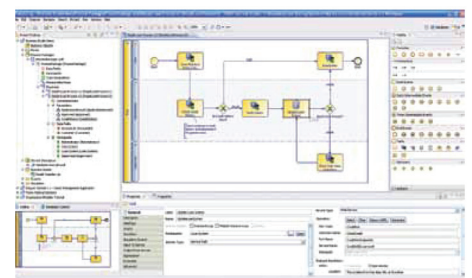
TIBCO Business Studio™ is a standards-based, unified business process modeling and development environment that enables business experts and IT to collaborate to model, develop, and deploy business process applications. Business experts can rapidly model business processes, user interface forms and page flows, business objects (data), and organizational structures. Process models can be simulated to understand their behavior and impact on the business. Process developers

also use TIBCO Business Studio to develop the process applications and deploy them to TIBCO ActiveMatrix® BPM or TIBCO Silver™ BPM.

The model-driven approach to implementing business process applications simplifies process modeling and development with virtually no coding. It allows teams of business experts and process developers to focus on developing process applications that meet business requirements using a fast, iterative, and collaborative approach where process specifics are embodied in the model and not in extraneous code.

TIBCO Business Studio is available as a free download for use as a standalone process modeling tool:

http://developer.tibco.com/business_studio/default.jsp



TIBCO Business Studio allows business experts to own, model, and manage their business process assets, including the supporting data, UI, and organizational models.

ATTRIBUTES & CAPABILITIES

Process Modeling

Enables standards-based process modeling using BPMN, with process definitions persisted and exchanged using XPDL. An extensible BPMN fragment library supports reusable best practices. Built-in support for work management patterns for common interactions between processes and people. Processes can be debugged and emulated from within the modeling environment. TIBCO also publishes industry standard process models such as SCOR, DCOR, HR-XML, and PRINCE2.

Business and Developer Views

A process model is treated as a single entity with two unique views, one for business experts and one for process developers. Business experts can model processes, add forms and page flows to create mockups, run simulations, and associate relevant documentation. Process developers then implement further details such as calls to web services or back-end systems in the same tool. This ensures one consistent model from modeling through development to deployment avoiding "round trip" issues and encourages collaboration between business experts and process developers.

Process Simulation and Reporting

Run simulations based on real data or sample data to validate processes and identify details such as costs, times, bottlenecks, or underutilized resources. Properties such as cost, time, or resources can be associated with each process participant and activity. Built-in reporting enables users to generate reports on these details or compare different processes to assess the impact of any change.

Business Object (Data) Modeling

Business data is modeled using UML, allowing users to define a vocabulary of core business objects. This abstracts business data from process models, encouraging data model re-use across processes. Data models can be generated from the WSDL of existing services or generate WSDL to drive service implementations.

Form and Page Flow Modeling

Employ wizards and a rich design palette to graphically design, view, and test forms for process participants. Forms can be generated from activity data to enable rapid development. Forms can be orchestrated into multi-screen page flows that are lightweight user interaction processes capable of invoking services. Page flows and forms can be displayed in the out-of-the-box Web 2.0 (Ajax) and gadget-based web clients or easily used in a variety of custom portals and clients.

Organizational Modeling

Enables model-driven work distribution by allowing processes to assign work based on an organizational model that defines structure and attributes. The structure of an organization is a key aspect in the behavior of business processes and how people perform work. Business analysts can visually model the organizational structure, attributes, and relationships that underpin processes. On deployment, the organizational model is mapped to a corporate directory; this mapping can be dynamically changed at runtime allowing work distribution to be optimized without impacting process models.

Process-Driven Composite Applications

TIBCO Business Studio enables the rapid development of SCA-modeled process-driven composite applications combining BPM and SOA. Reusable services are created using Java, .NET, and C/C++ or composite services composed from existing services. Process applications are rapidly developed using these services. The entire composite application is deployed on either TIBCO ActiveMatrix or TIBCO Silver.

PLATFORM AND STANDARDS

Operating Systems (Intel x86 platforms)

- Windows Server 2003
- Windows XP Professional
- Windows Vista
- Red Hat Enterprise Linux 4 and 5
- SUSE Linux 10 and 11

Java Runtime

- JRE 1.6.0

Browsers

- Internet Explorer 7 and 8
- Firefox 2.0, 3.0-3.6

Standards

- BPMN
- XPDL
- UML
- Eclipse

About TIBCO

TIBCO Software Inc. (NASDAQ: TIBX) is a provider of infrastructure software for companies to use on-premise or as part of cloud computing environments. Whether it's efficient claims or trade processing, cross-selling products based on real-time customer behavior, or averting a crisis before it happens, TIBCO provides companies the two-second advantage™ - the ability to capture the right information, at the right time and act on it preemptively for a competitive advantage. More than 4,000 customers worldwide rely on TIBCO to manage information, decisions, processes and applications in real-time. Learn more at www.tibco.com.

Global Headquarters
3303 Hillview Avenue
Palo Alto, CA 94304

Tel: +1 650-846-1000
+1 800-420-8450
Fax: +1 650-846-1005

www.tibco.com

